



**BREAKOUT SESSION 5**  
9/14/22 | 4:30PM – 5:30PM

**BRIDGEFARMER & ASSOCIATES, INC.**  
CONSULTING ENGINEERS  
*Since 1976*

**AWARD-WINNING EXCELLENCE IN ENGINEERING SERVICES**  
WWW.BRIDGEFARMER.COM  
(972) 251-8800

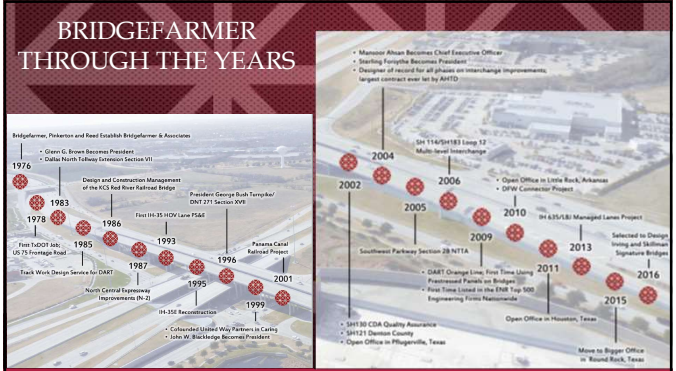
Headquartered in Dallas, TX  
Atlanta | Houston | Austin | Little Rock

Bridgefarmer Presents "Solving the Puzzle" - a riveting Interchange

*Don't Miss Us!*

1

## BRIDGEFARMER THROUGH THE YEARS



- 1976: Bridgefarmer, Pickens and Reed establish Bridgefarmer & Associates
- 1978: First TxDOT Job - US 75 Interchange Road
- 1983: Design and Construction Management of the U.S. Red River Water Bridge
- 1985: Frank Work Design Services for I-35E
- 1986: First I-35 HOV Lane PMS
- 1987: North Central Expressway Improvements (N-3)
- 1988: Parsons Canal Referral Project
- 1989: I-35E Reconstruction
- 1993: Paulson George Bush Turnpike DNT 271 Section 908
- 1995: Consolidated Utility Way Partners in Dallas
- 1999: Lathin W. Blackledge becomes President
- 2001: Open Office in Little Rock, Arkansas
- 2002: SH 114/SH 183 Loop 12 Multi-level Interchange
- 2004: SH 131 Dallas County
- 2005: Southwestern Parkway Section 28 NITA
- 2006: I-635/LB Managed Lanes Project
- 2009: GAT Change Lines from Time Using Fragmented Funds on Bridge
- 2010: Selected to Design Irving and Skillman Signature Bridge
- 2011: First Time Listed in the ENR Top 500 Engineering Firms Worldwide
- 2013: Open Office in Houston, Texas
- 2015: Open Office in Pittsburgh, Texas
- 2016: Move to bigger Office in Round Rock, Texas

2

### FIRM INFO: LEAGACY OF

**BRIDGEFARMER & ASSOCIATES, INC.**

Founded in 1976 by Joe Bridgefarmer

46 years in Heavy Civil Engineering

- HIGHWAYS
- INTERCHANGES
- RAILROADS
- BRIDGES





Richardson, TX

3



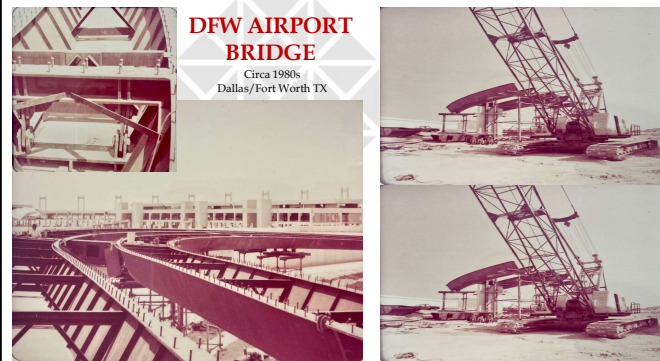

**DFW AIRPORT BRIDGE**  
Circa 1980s  
Dallas/Fort Worth TX

(THI)  
D/FW BRIDGE  
CONTRACT NO. C-128-71  
PACKAGE NO. 18  
DIMENSION 8'-0" X 24'-0" X 24'-0"  
GROSS W.T. 5,076  
MADE IN JAPAN

4

### DFW AIRPORT BRIDGE

Circa 1980s  
Dallas/Fort Worth TX



5

### LOOP 12 & SH 114 INTERCHANGE



6



7



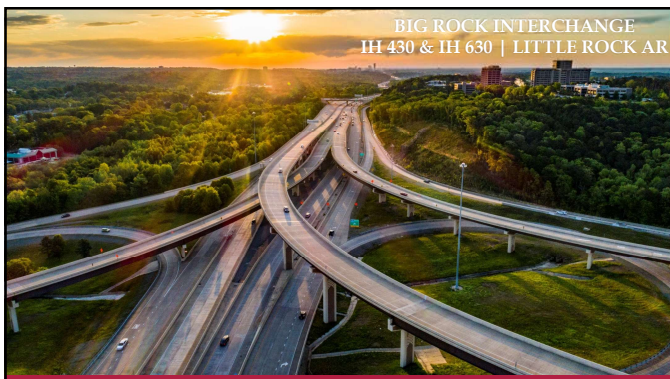
8



9



10



11



12



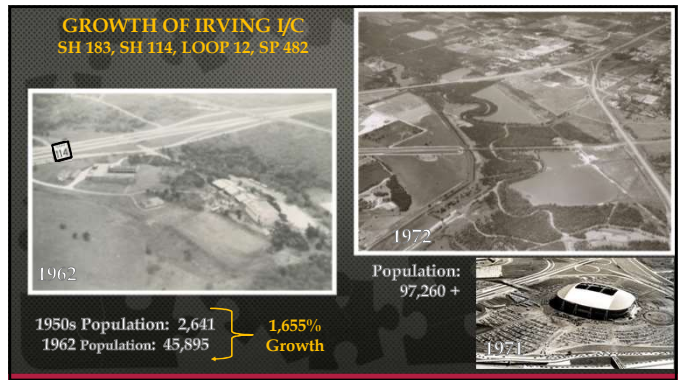
13



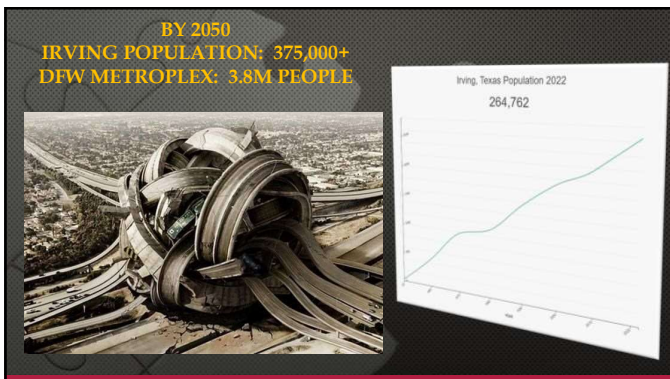
14



15



16



17



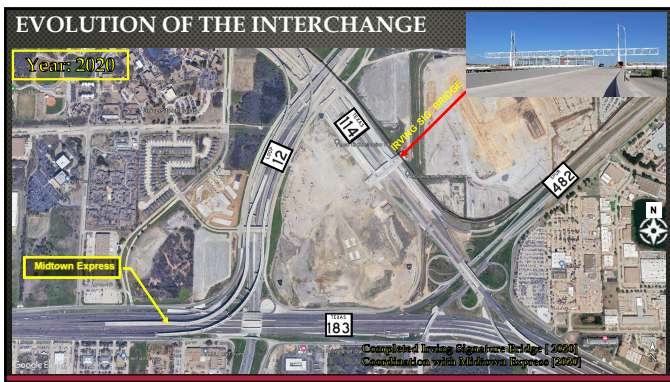
18



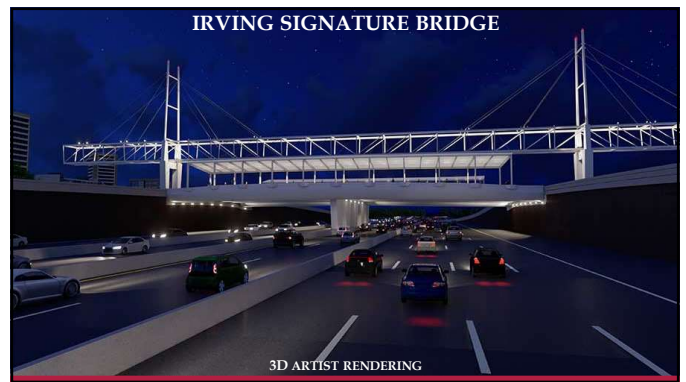
19



20



21



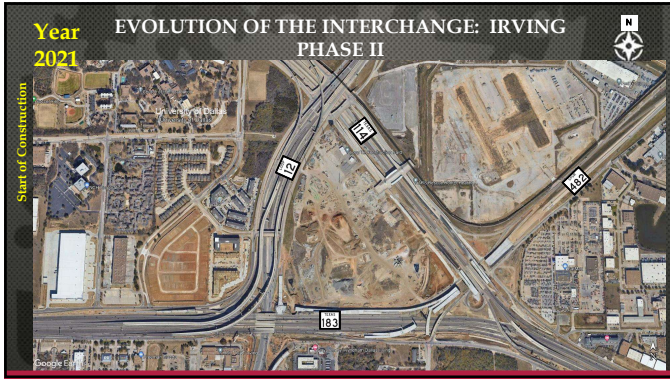
22



23



24



25



26

**BY THE NUMBERS**

**32 BRIDGES** will be constructed including:

- 10 DIRECT CONNECTORS between Loop 12, SH 183, SH 114 and Spur 482.
- 22 OVERPASS BRIDGES along Loop 12, SH 183, SH 114 and Spur 482.
- 261,000 SY of concrete will be used, which is about 40.5 TIMES as big as the area of an American football field.
- 4.6 MILES of roadway and 4.8 MILES of bridge will be built as part of this project.\*

**MATERIALS THAT WILL BE USED:**

- 1.2 MILLION SQUARE FEET of reinforced concrete slab
- 170,000 LINEAR FEET of concrete bridge beams. (That equals 32.2 MILES)
- 200,000 CUBIC YARDS of concrete
- 90,000 TONS of hot mix asphalt
- 2.8 MILLION POUNDS of steel plate beams
- 41 retaining walls will be constructed
- 700+ drilled shafts foundations
- 500+ columns will be built as part of this project

27

**170,000 LINEAR FEET of concrete bridge beams. (That equals 32.2 MILES)**

- ✓ DT Dallas to DT Fort Worth
- ✓ Dallas Zoo to Fort Worth Zoo
- ✓ Jerry Jones' office at The Star to AT&T Stadium Parking Lot
- ✓ Golden Gate Bridge to Silicon Valley Tech Hubs near Palo Alto, CA
- ✓ Brooklyn Bridge NYC to Washington Bridge NYC

**200,000 CUBIC YARDS of concrete**

- ✓ Bumper-to-bumper redi-mix trucks for 150 miles
- ✓ Dallas to College Station

28

**STAKEHOLDERS & UTILITIES INVOLVED**

**IRVING**

- Lease agreement
- Regular coordination for water/sewer relocations
- Meetings

**DART**

- Right of Entry agreement
- Safety Training
- Lightrail training
- Coordination

**Other Businesses**

- Coordination with FedEx for 48" waterline
- Coordination with CAI-HOLT for bridge flyover (#26)
- Other coordination as needed

29

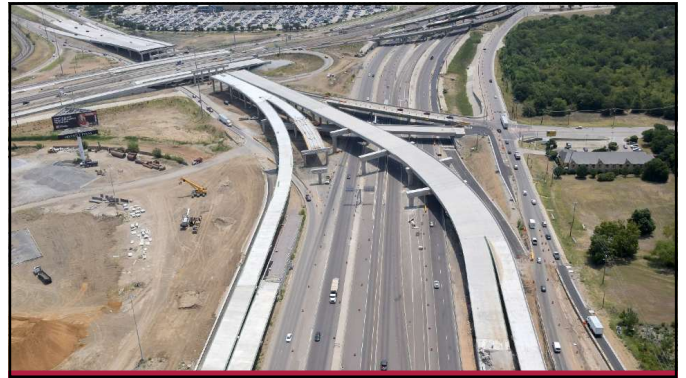
**STAKEHOLDERS & UTILITIES INVOLVED**

30

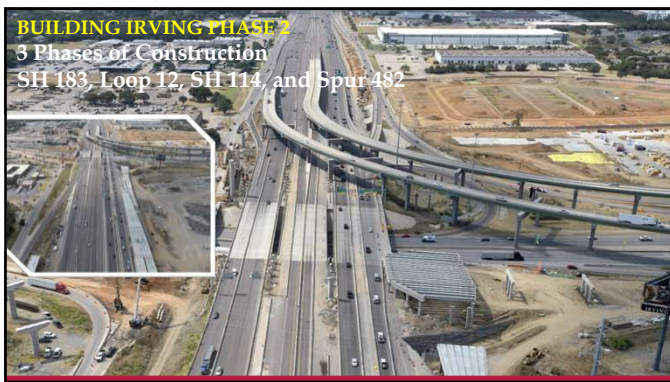




37



38



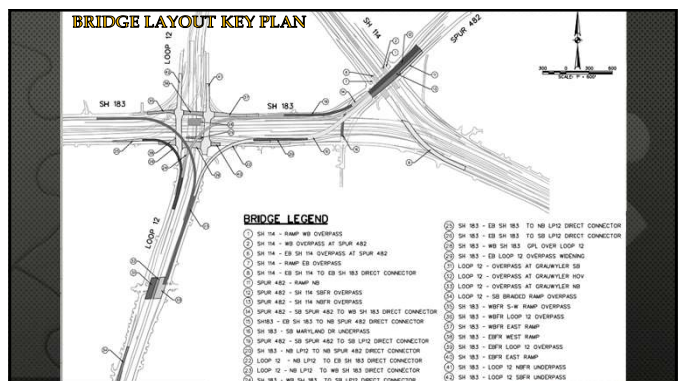
39



40



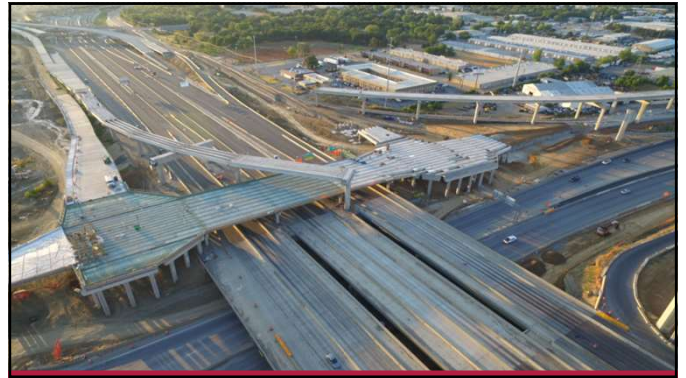
41



42



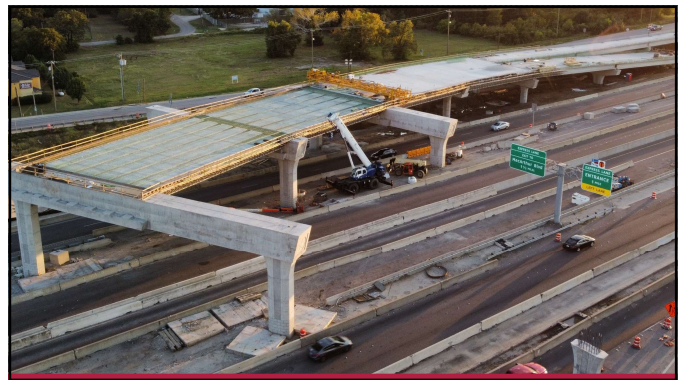
43



44



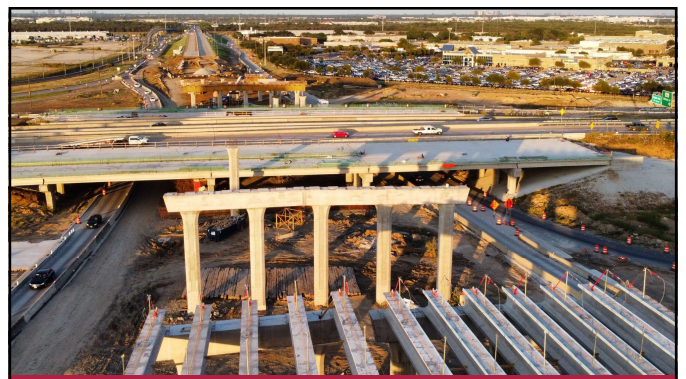
45



46



47

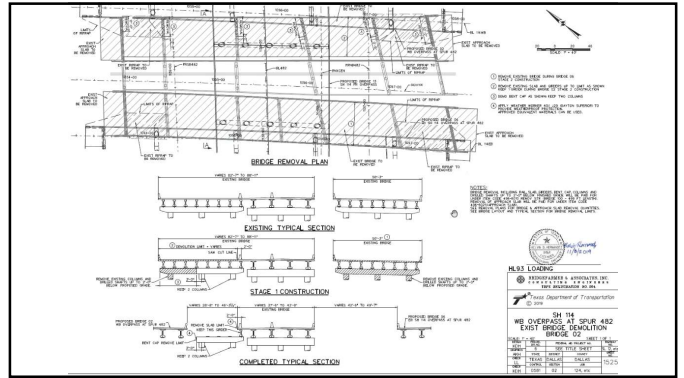


48

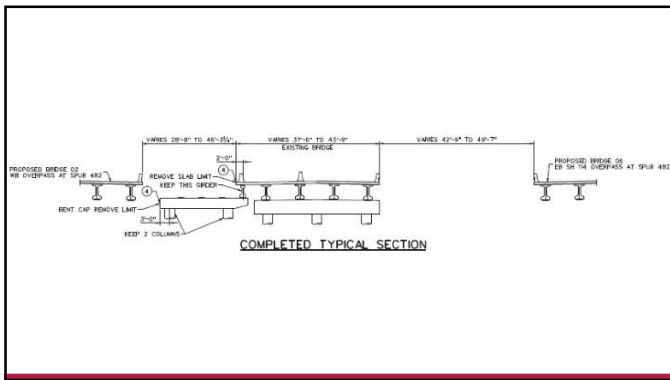




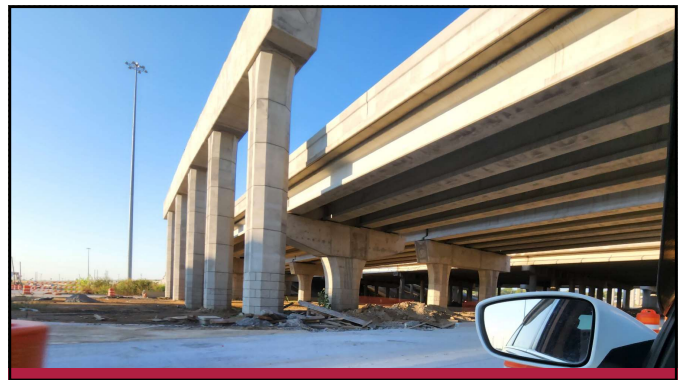
49



50



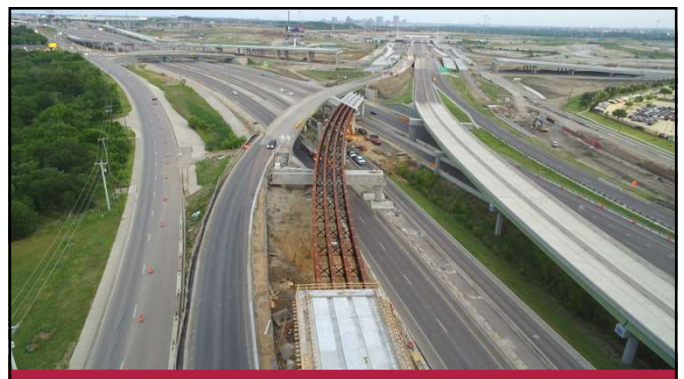
51



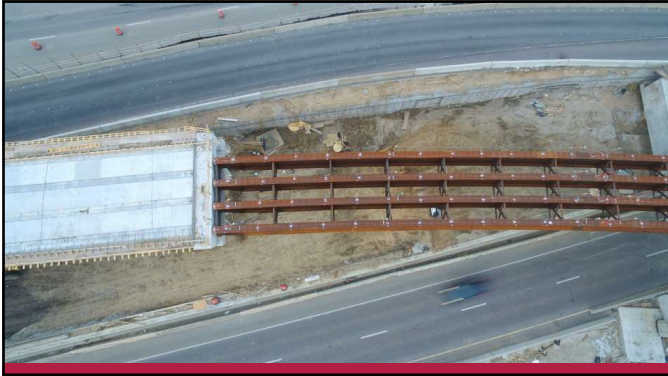
52



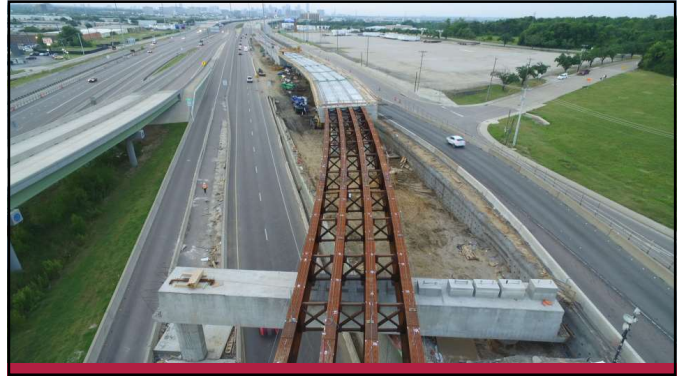
53



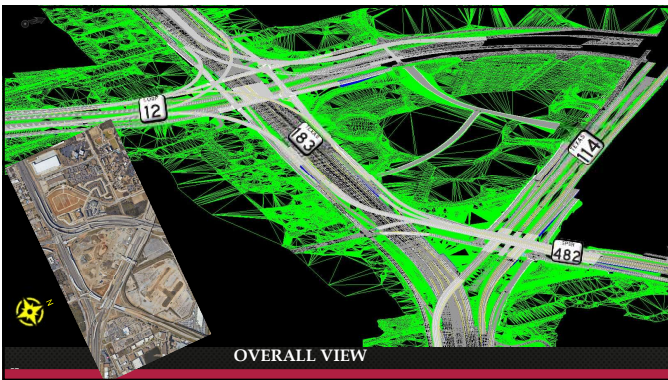
54



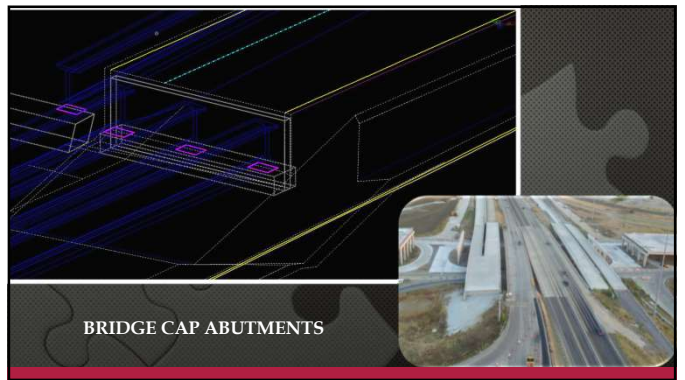
55



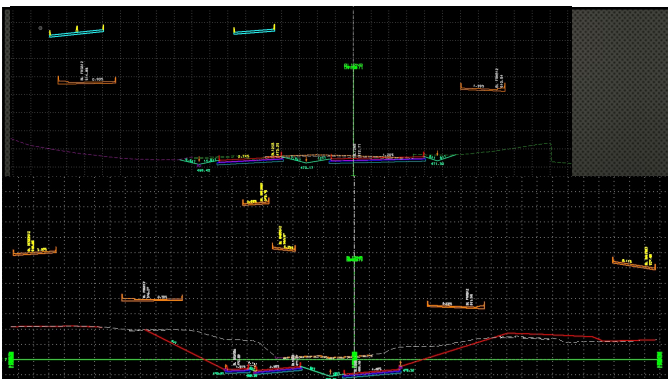
56



57



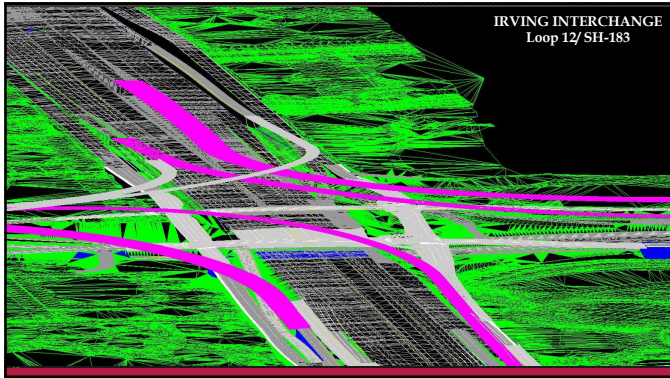
58



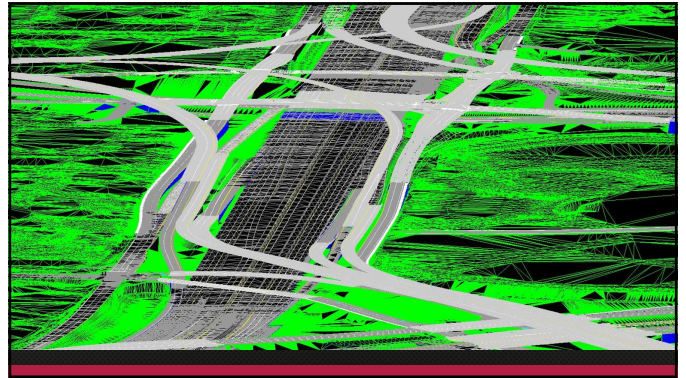
59



60



61



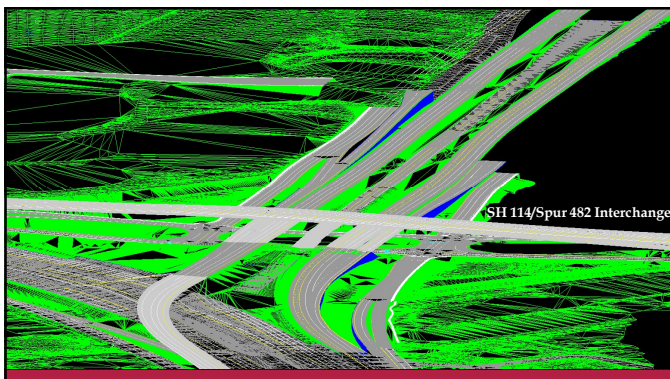
62



63



64



65



66



67



68